

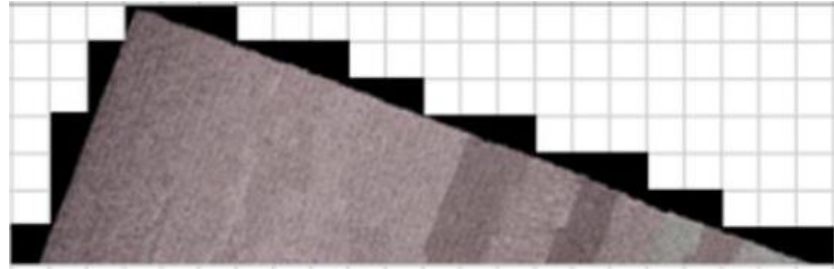
1605 Sebring Hills Dr.
Henderson, Nevada 89052



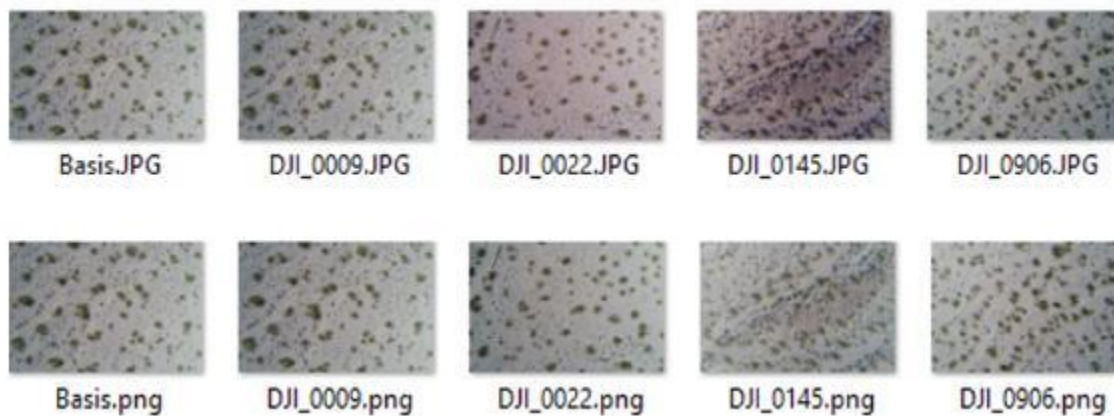
email: information@brainlike.com
website: <http://www.brainlike.com/>
facsimile 619-393-0364

PixMin correction image color variability correction

PixMin includes a color alignment option that removed a color variability artifact from drone transect search flights. Without removing the artifact, target detection would not have been possible. The figure on



the right shows some combined orthophotographs that we produced from raw imagery as part of our drone-based desert tortoise detection project (see our *PixMin_wildlife_drone_camera_triage.pdf* report). As you can see, the imagery colors varied visibly during drone transect flights. These variations were due to visibility changes throughout the day. Variations like these can greatly reduce automatic detection efficiency unless they can be corrected automatically. PixMin color variability correction removed the variability by converting input images to corrected images with the same color distributions, as shown in the figure below.



Many related applications exist where image colors change during continuous monitoring. Unless these changes are removed, major loss of detection precision may result. If you have related needs, we are here to help. Feel free to contact us.