

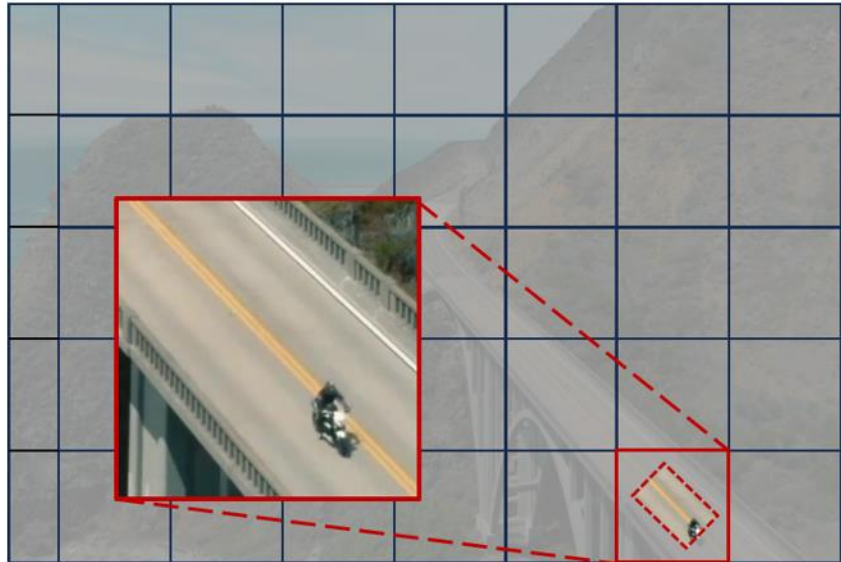
Brainlike, Inc.  
1605 Sebring Hills Drive  
Henderson, Nevada 89052



email: [information@brainlike.com](mailto:information@brainlike.com)  
website: <http://www.brainlike.com/>

## PixMin Threat Detection from Fixed Cameras

PixMin can detect threats from fixed cameras precisely and effectively using a variety of methods including, but not limited to, “auto-adaptive” change detection and sub-image masking. For one use-case, shown on the right, we showed that PixMin can detect unexpected traffic precisely, by automatically masking background clutter and automatically adapting to changes in lighting conditions.



For another use-case, shown below, we showed that PixMin can detect unexpected floating objects likewise. PixMin can detect these and other threats more precisely, that is, with higher detection likelihood along with fewer false alerts, than alternative automatic detection methods. PixMin can run based on little or no prior training, in sharp contrast with other machine learning methods. If necessary, PixMin processors can run with solar powered cameras to detect and transmit alerts over low-bandwidth communication channels, persistently and effectively. For more details, feel free to contact us.

